

**THE BURDEN OF MEDICALLY ATTENDED
RSV INFECTION IS FELT BY PARENTS,
CAREGIVERS AND ACROSS
HEALTHCARE SERVICES**

**VOICES OF
ALL INFANTS**

**IT'S TIME TO
RETHINKRSV.CA**

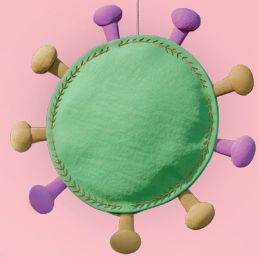
SCAN HERE FOR MORE INFO



RSV=respiratory syncytial virus.

WE CAN'T PREDICT WHICH HEALTHY INFANTS WILL BE AFFECTED BY A SEVERE RSV INFECTION¹⁻³

Severe RSV disease does not only occur in infants born pre-term or with underlying health conditions⁴



AMONG CHILDREN HOSPITALIZED DUE TO RSV:

79% were previously healthy and born at term^{4*}

~50% were born before the season began⁵

While the majority of infant cases of RSV result in mild illness, RSV is a leading cause of respiratory hospitalization in infants under 2 years of age in Canada^{6,7†}



* Data from a 5-year, prospective, population-based surveillance of children hospitalized with RSV between October 2000 and March 2005. Among 559 RSV-hospitalized infants aged <24 months, 79% were previously healthy.

† Data extracted from the Canadian Discharge Abstract Database from 2003 to 2014 using a regression model to estimate respiratory hospitalizations attributable to influenza, RSV and other respiratory viruses.

THE MAJORITY OF HEALTHCARE UTILIZATION RELATED TO RSV DISEASE IS IN THE OUTPATIENT SETTING⁸

Hospitalizations are only one part of the RSV burden: 90% of healthcare visits for infants with RSV in the US are outpatient services, of which 10% are emergency department visits⁸



Proportion of RSV cases by setting in children <1 year of age



~90%

of the burden is in the outpatient setting

10%

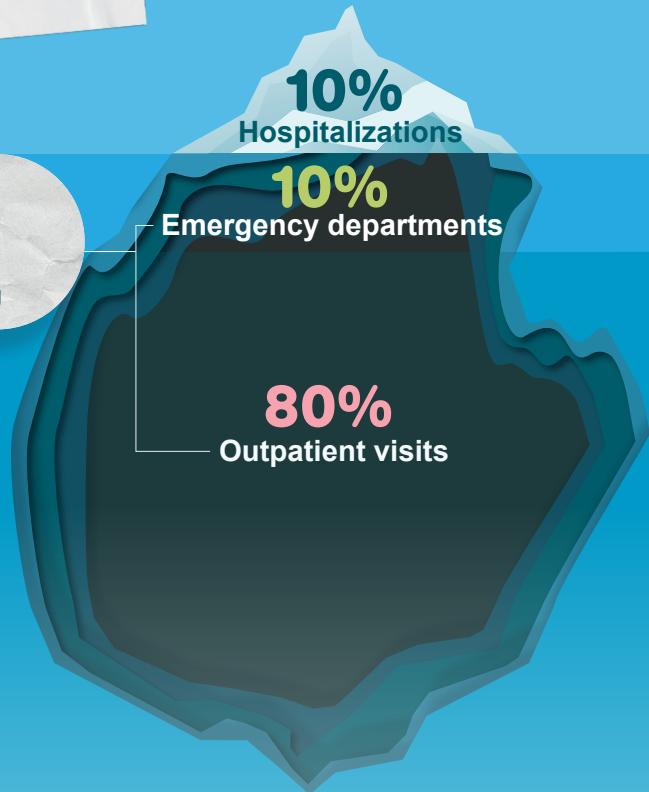
Hospitalizations

10%

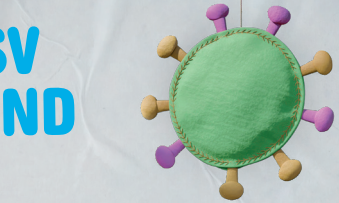
Emergency departments

80%

Outpatient visits



THE BURDEN OF RSV DISEASE MAY EXTEND BEYOND INITIAL MEDICAL CARE⁹⁻¹²



Otitis media is a frequent complication of RSV infection, having been reported in 3 out of 4 RSV-positive infants^{9*}



RSV hospitalization in infancy may be associated with greater wheeze in early childhood¹³



Children infected by RSV during infancy incur greater healthcare resource utilization over the following years compared with other children¹²

VOICES OF
ALL INFANTS

IT'S TIME TO
RETHINKRSV.CA

SCAN HERE FOR MORE INFO



* From a prospective cohort study on 408 Finnish infants during the RSV season of 2017–2018. Infants were followed for 10 months after birth (from September to June), with 134 infants developing an RSV infection during this period. Of these infants, 103 (76.9%) developed acute otitis media.

References: 1. Arriola CS, et al. *J Pediatric Infect Dis Soc* 2020;9(5):587–95. 2. Pisesky A, et al. *PLoS One* 2016;11(3):e0150416. doi: 10.1371/journal.pone.0150416. 3. Buchan SA, et al. *Pediatr Infect Dis J* 2019;38(4):362–69. 4. Hall CB, et al. *Pediatrics* 2013;132(2):e34a–38. 5. Demont C, et al. *BMC Infect Dis* 2021;21(1):730. 6. Centers for Disease Control. Available at: <https://www.cdc.gov/rsv/clinical/index.html>. Accessed June 8, 2022. 7. Schanzer DL, et al. *Influenza Other Respir Viruses* 2018;12:113–21. doi: 10.1111/irv.12497. 8. Tong S, et al. *J Glob Health* 2020;10(2):020422. doi: 10.7189/jogh.10.020422. 9. Thomas E, et al. *J Infect Dis* 2021;223(5):811–17. 10. Abreo A, et al. *Clin Infect Dis* 2020;71(1):211–14. 11. Piedmonte G & Perez MK. *Pediatr Rev* 2014;35(12):519–30. 12. Simoes EAF, et al. *J Infect Dis* 2020;221(8):1256–70. 13. Wingert A, et al. *Can Commun Dis Rep* 2021;47(9):381–96. doi: 10.14745/ccdr.v47.09a05.

sanofi

Copyright © Sanofi 2023. All rights reserved.
Do not use this piece after 31/07/2025 as some of the information may be outdated.
MAT-CA-2300885-v.1.0 - 07/2023

MEMBER OF
INNOVATIVE MEDICINES CANADA